

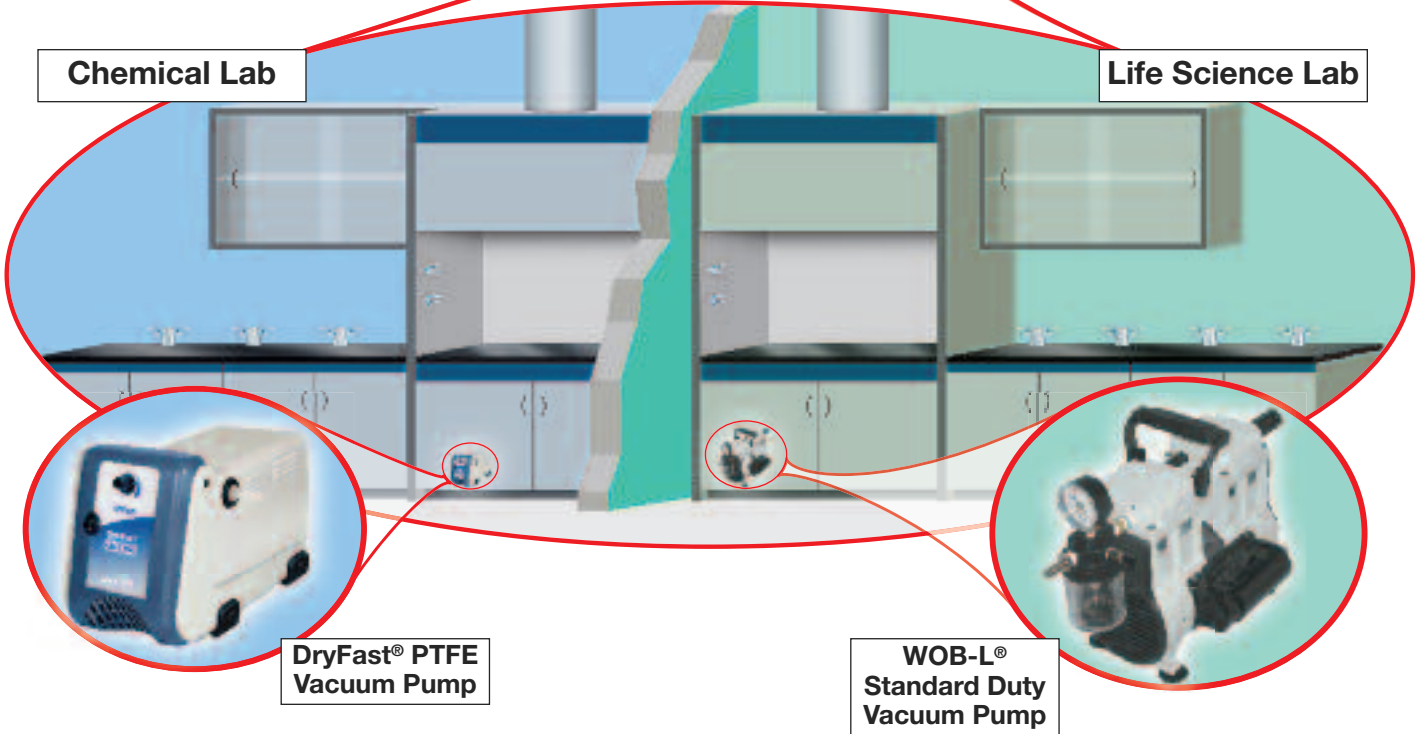
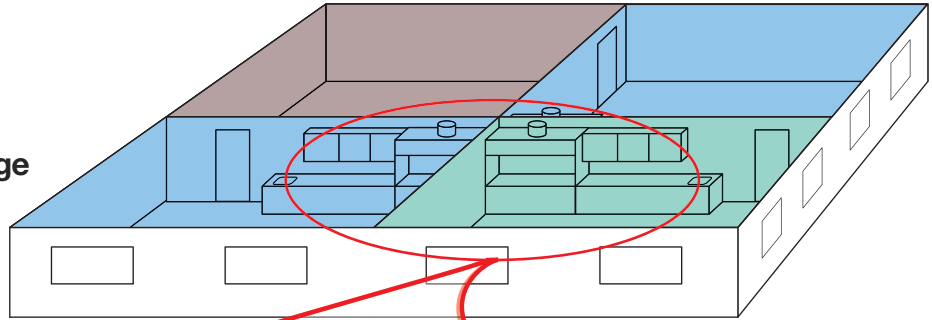
WelchNet™ Vacuum Systems

Networked Vacuum: Alternative to House Vacuums



Advantages

- Economical, Green Installation
- Modular Vacuum designed for each Lab's needs
- Superior control of:
 - Cross-contamination
 - Chemical Handling/Discharge
 - Vacuum availability/level



WelchNet Vacuum Systems combine installation savings with a vacuum capability tailored to your Lab's work and material flow. Using standard lab fixtures, initial WelchNet costs are typically 30-50% lower than contractor-installed central vacuum systems. Install a Welch Application-Certified dry vacuum pump in your Lab to improve control of vapor co-mingling, vacuum line contaminants and atmospheric discharge.

See reverse side for pump chemical resistance and sizing options or contact your Welch Sales Engineer at www.welchvacuum.com

Vacuum Pump Model Selector

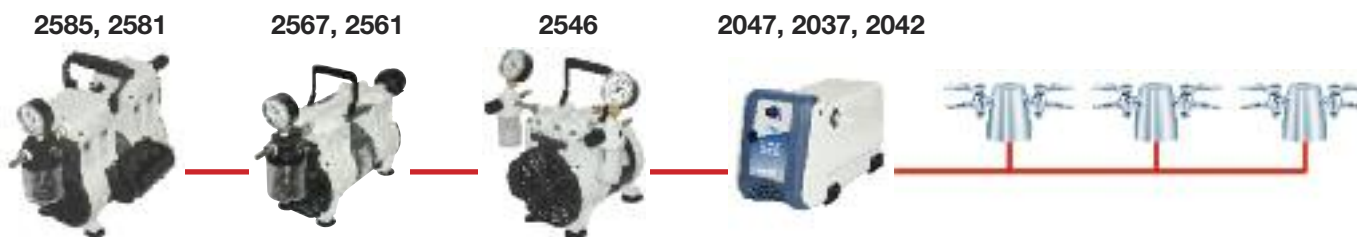
Use WelchNet™ Vacuum Systems to enable common shared laboratory Applications while benefiting from the advantages of a dedicated closed system. Achieve reliable control over your Lab's vacuum needs – the alternative to house vacuum operation uncertainties. Isolated WelchNet systems limit and control application cross contamination, eliminate building-wide vacuum line chemical accumulations, and enable the proper vacuum - as you need it.

Applications utilize high performance Welch dry vacuum pumps – oil free for low maintenance. Using standard piping and outlet fixtures, configure your system to enable vacuum pump fume discharge to a hood or consult your Welch representative for advanced solvent fume condensation options.

Application	Welch Vacuum Pump	Max. # of Outlet Fixtures ¹	
Filtration			
Standard Duty ²	2585B-50, 201 LPM, 27.6" Hg	20	
	2567B-50, 100 LPM, 27.6" Hg	10	
	2546B-01, 45 LPM, 27.6" Hg	5	
Chemical Duty	2047B-01, 70 LPM, 28.5" Hg	8	
	2037B-01, 50 LPM, 28.5" Hg	5	
Vacuum Oven			
Standard Duty	1.7 ft ³	2581B-50, 100 LPM, 5 torr	2
	0.6 ft ³	2561B-50, 60 LPM, 5 torr	2-3
Chemical Duty	1.7 ft ³	2042B-01, 35 LPM, 2 torr	1
	0.6 ft ³	2042B-01, 35 LPM, 2 torr	2-3
Other Applications	Consult your Welch representative		

1. Assumes all fixtures in use and vacuum supply lines >= 1/2"

2. "Standard Duty" is for non-corrosive fumes – primarily aqueous



Application Notes:

- Turn pumps on 1 minute prior to opening vacuum outlet valves
- Keep unused vacuum outlet valves closed to maximize network vacuum
- At shutdown, open 1 or more valves to air-clean volatiles from pump for 1 to 5 minutes; Switch off pumps, close all valves

Gardner Denver Thomas, Inc.
 Welch Vacuum Technology
 5621 W. Howard St.
 Niles, IL 60714
 Tel 847-676-8800
www.welchvacuum.com