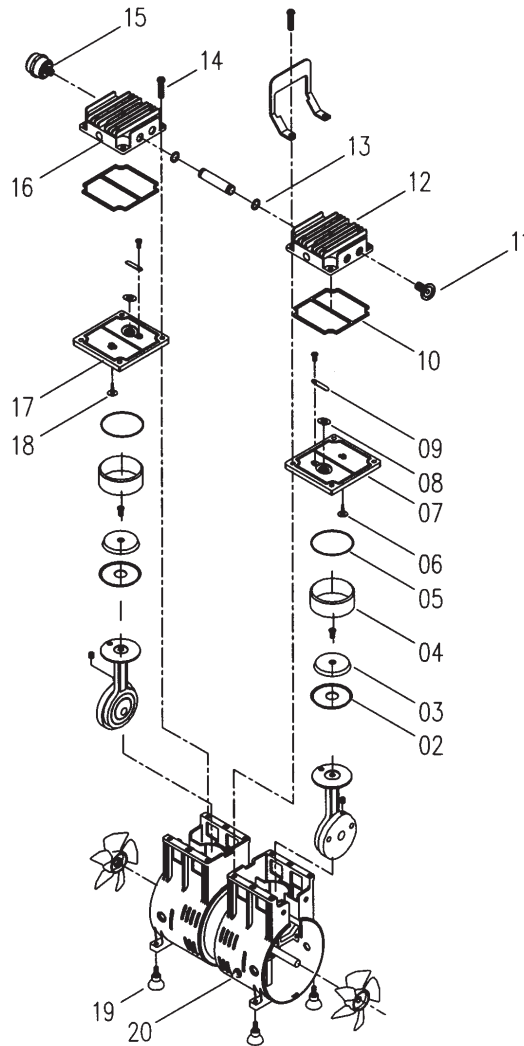


6.17 Parts List and Exploded View for Pump Model 2581



Model 2581

Item Number	Qty.	Part No.	Description	Service Kit 2581K-03	Seal Kit 2581K-04	Feet Kit 2500K-04
2	2	Note 1	Piston Cup	2	-	-
4	2	Note 1	Cylinder Sleeve	2	-	-
5	2	Note 1	O-Ring, Cylinder	2	-	-
6	1	Note 1	Valve, Intake / Intake Stage	1	1	-
8	2	Note 1	Valve, Exhaust	2	2	-
10	2	Note 1	O-Ring, Valve Plate	2	2	-
13	2	Note 1	O-Ring, Connector Tube	2	2	-
14	8	Note 1	Head Screw	8	-	-
18	1	Note 1	Valve, Intake / Exhaust Stage	1	1	-
19	4	Note 1	Rubber Suction Feet	-	-	4

Note 1: These parts are not available separately, but are supplied within the kits shown in last three columns.

All production models of 2581 made before 03/29/02 use service kit 2581K-13 (short cylinder sleeve)

All production models of 2581 from 04/01/02, and later, use service kit 2581K-03 (long cylinder sleeve)