

LINEAR AIR COMPRESSORS and VACUUM PUMPS

67-1766R1.1

IMPORTANT SAFETY INSTRUCTIONS

Read and understand the following information and instructions included with this product before using. This information is for your safety and to prevent damage to this product. Failure to observe these safety precautions could result in severe bodily injury, including death in extreme cases. **Save these instructions.**

GENERAL

Operation and maintenance instructions as well as parts information presented herein relate to the following linear air pump models:

Pressure Pumps	2420	2430
	2440	2460 2478
Vacuum/Pressure	2415	2425

OPERATION

Ambient conditions - All air pumps should be operated in a well ventilated area where the surrounding air is relatively clean, dry and temperatures are consistently within the range of 35°F and 100°F.

WARNING

To avoid fire or explosion, do not operate this product in areas with flammable gases, vapors or explosive dust in the air. Flammable gases or vapors include but not limited to; lighter fluid, solvent type cleaners, oil -base paints, gasoline, alcohol or aerosol sprays. Explosive dusts included but not limited to; coal, magnesium, grain or gun powder.

ELECTRICAL

Operation of all linear air pumps require connection to a source of electric power. On models supplied with a factory mounted cord and plug assembly, the three prong plug can simply be inserted into a standard 115 volt wall outlet to make the pump operate (see grounding instructions). For models supplied with bare wire leads, a qualified electrician should be contracted to install the pump.

These linear air pumps are electrically thermal protected using a "single trip", Non-replaceable type protector. If the pump fails to operate after initial start-up, the protector may have tripped indicating a high temperature condition existed. Once these "single trip" type protectors have tripped the pump is no longer usable and must be replaced.

MAINTENANCE

Periodic maintenance is required on all linear pressure pumps. (Models 2420, 2430, 2440, 2460, & 2478). Diaphragm and head assemblies for these models should be replaced after every 24 months of operation.

CAUTION: To reduce risk of electrical shock...

1. Do not disassemble. Disassembly or attempted repairs if accomplished incorrectly can create electrical shock hazard. Refer to servicing to qualified service agencies only.
2. If this product is supplied with a three pronged plug, connect unit to a properly grounded outlet only.

DANGER: To reduce risk of explosion or fire...

1. Do not use this product in or near explosive atmospheres or where aerosol (spray) products are being used.

2. Do not pump anything other than atmospheric air
3. Do not pump combustible liquids or vapors with this product or use in or near any area where flammable or explosive liquids or vapors may exist.

CAUTION: To prevent injury...

1. Never operate this product if it has a damaged cord or plug, if it is not working properly, if it has been dropped or damaged, or if it has fallen into water. Return the product to a service center for examination and repair.
2. Never block any air openings (inlet) of this product or place it on a soft surface where the openings may be blocked. Keep all air openings free of lint, dirt and other foreign objects.
3. Never drop or insert fingers or any other object into any openings.
4. Do not operate this product where oxygen is being administered.
5. Do not use any tools or attachments without first determining maximum air pressure for that tool or attachment.
6. Never point any air nozzle or air sprayer toward another person or any part of the body.

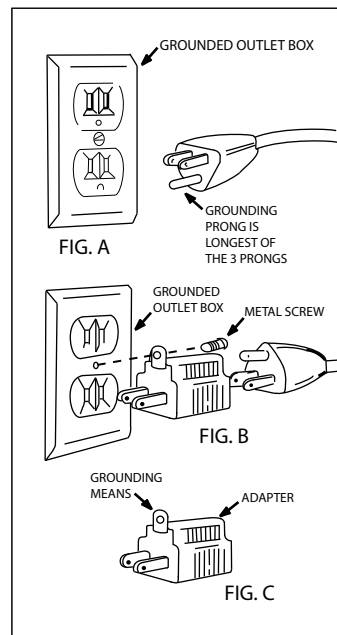
GROUNDING INSTRUCTIONS

This product should be grounded in accordance with all local codes and ordinances while in use to protect the operator from electric shock. This product is equipped with an approved three-conductor cord and three-prong grounding type plug to fit the proper grounding type receptacle. The green (or green and yellow) conductor in the cord is the grounding wire. Never connect the green (or green and yellow) wire to a live terminal. Your unit is for use on less than 150 volts, it has a plug like that shown in Fig. A. An adapter, Figures B and C, is available for connecting Figure A plugs to two-prong receptacles. The green-colored rigid ear, lug, etc., must be connected to a permanent ground such as a properly grounded outlet box.

Adapter shown in Figures B & C is Not for Use in Canada.

We recommend that you NEVER disassemble the product or try to do

any rewiring in the electrical system. Any such repairs should be performed only by a Gardner Denver Thomas Products Service center or other qualified service organizations. Should you be determined to make a repair yourself, remember that the green colored wire is the "grounding" wire. Never connect this green wire to a "live" terminal. If you replace the plug on the power cord, be sure to connect the green wire only to the grounding (longest) prong on a 3 prong plug. If you use an extension cord, be sure that it is a 3-conductor grounding type cord. Grounding must be continuous from the product plug to the ground receptacle.

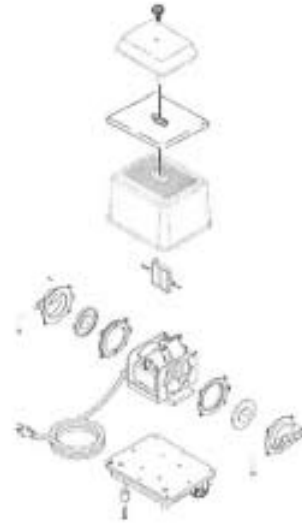


DRAWING & SERVICE KITS

SERVICE KITS

(Kits include (2) diaphragm assembly, tank gasket, inlet filter, and (2) tie straps)

Model	Part No.
2420	2420K-01
2430 & 2440	2440K-01
2460	2460K-01



Warning

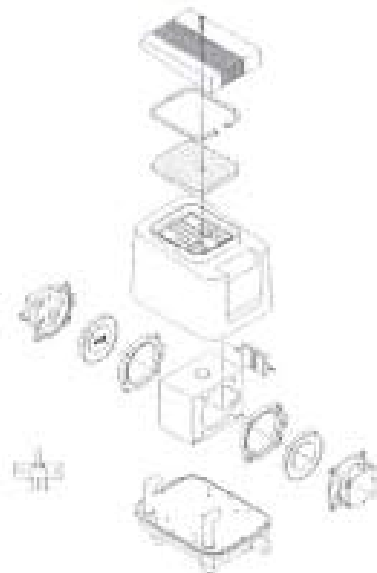


Gardner Denver Thomas Inc. compressors are precision-made, and carefully assembled and wired. Therefore do not disassemble or attempt to repair these products. Only qualified personnel should perform repair service.

SERVICE KITS

(Kits include (2) diaphragm assembly, tank gasket, inlet filter, and (2) tie straps)

Model	Part No.
2478	2478K-01



WELCH

A Gardner Denver Product

**Gardner Denver Thomas, Inc.,
Welch Vacuum Technology
5621 W. Howard St.
Niles, IL 60714 USA
Phone: 847-676-8800
Fax: 847-677-8606
E-Mail: gdwelch@gardnerdenver.com**

Please use the on-line Repair Request Form under "Service and Support" at www.welchvacuum.com